

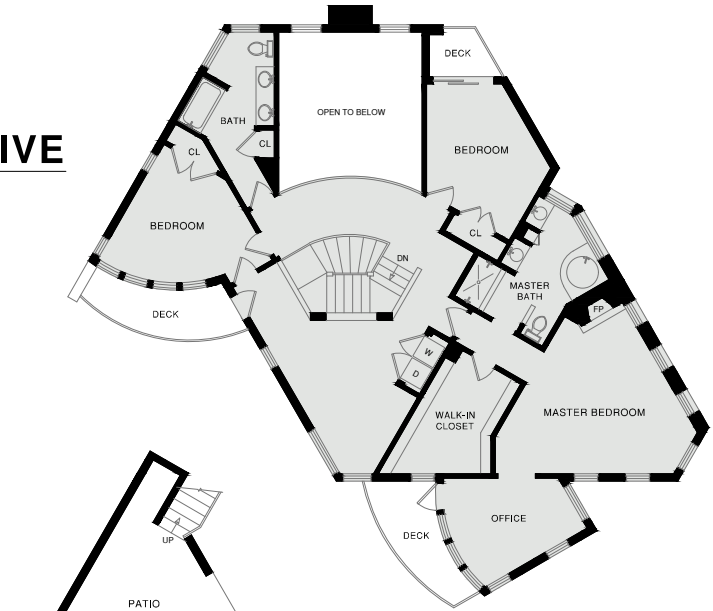
NOTE: SQ FT FIGURES ARE ESTIMATES ONLY AND HAVE BEEN DERIVED SIMPLY FOR THE MARKETING-STYLE FLOOR PLANS DEVELOPED BY OPEN HOUSE DRAFTING.

7133 NORFOLK DRIVE BERKELEY, CA

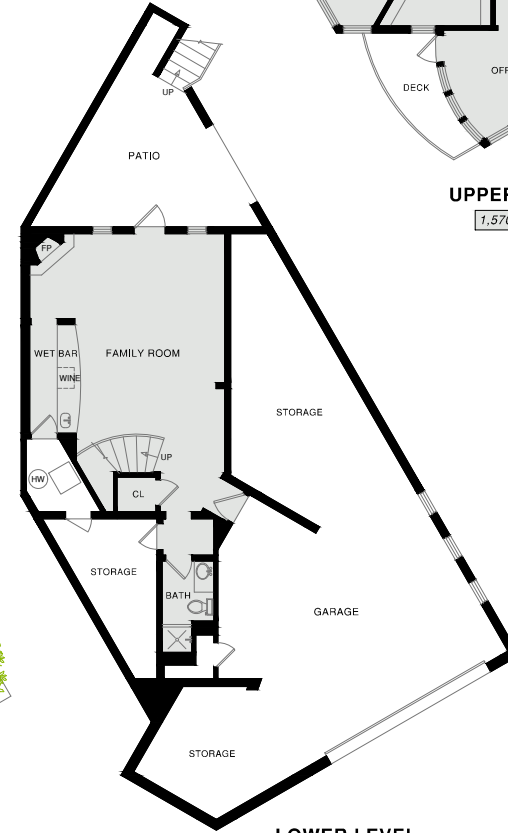
3,845 TOTAL
LIVABLE SQ FT



MAIN LEVEL
1,665 SQ FT



UPPER LEVEL
1,570 SQ FT



LOWER LEVEL
610 SQ FT